

Clarke[®] **METALWORKER**



150/200MM METAL SHEARS
MODEL NO: CPS150B & CPS200B

PART NO: 1700261 & 1700263

USER INSTRUCTIONS

GC0316

INTRODUCTION

Thank you for purchasing this CLARKE product.

These metal shears are suitable for cutting sheet metal and bar up to the sizes stated below.

Before attempting to use this product, please read this manual thoroughly and follow the instructions carefully. In doing so you will ensure the safety of yourself and that of others around you, and you can look forward to your purchase giving you long and satisfactory service.

GUARANTEE

This product is guaranteed against faulty manufacture for a period of 12 months from the date of purchase. Please keep your receipt which will be required as proof of purchase.

This guarantee is invalid if the product is found to have been abused or tampered with in any way, or not used for the purpose for which it was intended.

Faulty goods should be returned to their place of purchase, no product can be returned to us without prior permission.

This guarantee does not effect your statutory rights.





SPECIFICATIONS

	CPS150B	CPS200B
Dimensions (D x W x H)	290 x 113 x 305 mm (without handle)	360 x 100 x 335 mm (without handle)
Weight	12.3 kg	16.4 kg
Shearing Capacity -Bar	8 mm	10 mm
Shearing Capacity - Sheet	5 mm	5 mm

SAFETY PRECAUTIONS

SAFETY SYMBOLS

Please read all of the safety and operating instructions carefully before using this product. The following safety symbols may be found on the product.

	Keep fingers clear of blade		Always read the manual before use
	Wear eye protection		Do not exceed the rated cutting capacity of the machine.

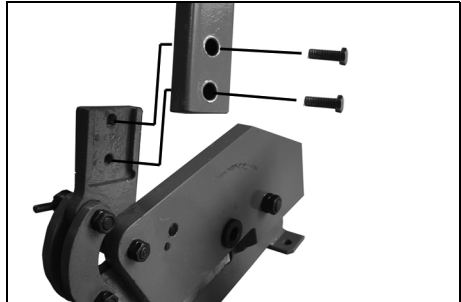
As with all tools and workshop equipment, it is necessary to exercise caution when they are put to use. Be aware of the inherent dangers associated with their use.

1. ALWAYS wear suitable safety glasses when using the metal shears to guard against the possibility of damage from flying offcuts.
2. Round stock bar should only be cut using the hole provided in the cutting blade.
3. The metal shears are only designed for cutting low carbon (mild) steel. The attempted cutting of tool steels, high carbon or alloy steels will damage the cutting blades.
4. ALWAYS keep the cutting blades sharp and free from burrs or other damage.
5. DO NOT use an extension to the handle. If hand leverage cannot cut the metal, then the work is either too large or it is of the wrong material.
6. These metal shears must be firmly secured to a firm and level bench using suitable 10 mm bolts. (not supplied)
7. Leave adequate working space around the shear for safer and convenient operation.
8. Never attempt to cut materials which exceed the sizes stated in the specification.
9. Always use the full length of the handle to increase the cutting force.
10. Always keep fingers well away from the cutting blades during operation.

ASSEMBLY & MOUNTING

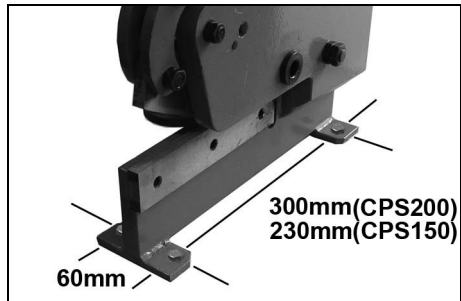
The metal shears are pre-adjusted at the factory and is ready to use once the handle is fitted.

1. Bolt the handle to the metal shears using two bolts and washers supplied.



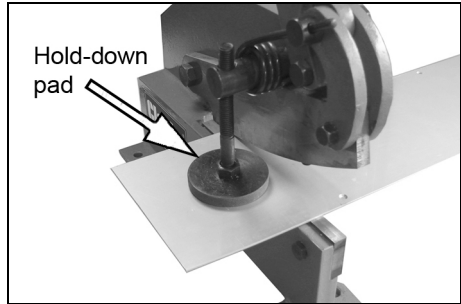
2. Mount the metal shears on a sturdy workbench at a height which allows easy operation, taking into account the nature of the work.

- 4 x10 mm bolts will be required (not supplied), suitable for mounting to the chosen bench. Holes will need to be drilled at the positions shown.



OPERATION

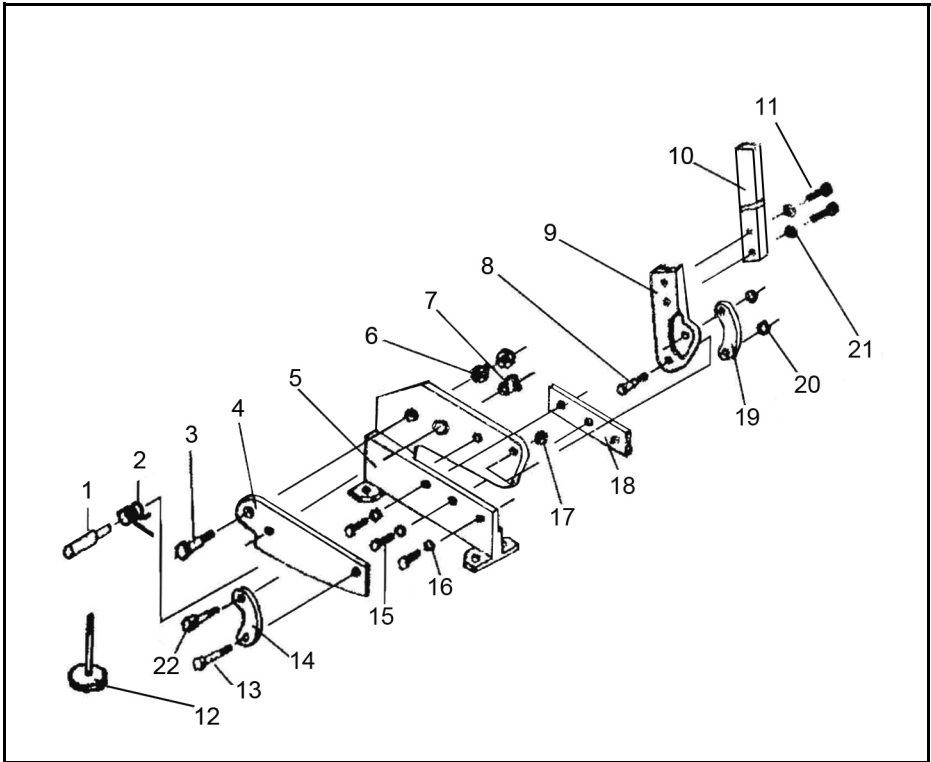
1. Position the material to be cut between the cutting blades from the left hand side, ensuring the hold-down pad is just touching the top of the workpiece.
 - The hold-down pad can be adjusted to position workpieces of different sizes.
 - Take care that the hold-down pad always keeps the work exactly level.
2. Pull the handle to cut the desired length, holding the cut material firmly.
 - Round bar should ALWAYS be inserted through the hole in the upper cutting blade.
3. Occasionally oil the moving parts of the metal shears.
4. Periodically check that all bolts and nuts are tight.



ENVIRONMENTAL PROTECTION

If disposing of damaged components or scrap metal, do not dispose of with general waste. This product contains valuable raw materials. Metal products and scrap should be taken to your local civic amenity site for the recycling of metal products.

COMPONENT PARTS

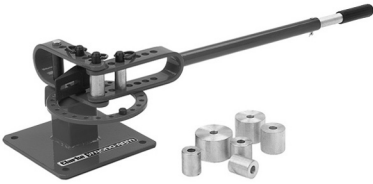


No	Item
1	Pivot Shaft
2	Return Spring
3	Retaining Bolt
4	Upper Blade
5	Body
6	Washer
7	Rod Shearing Bush
8	Hinge Bolt
9	Arm
10	Handle
11	Bolt

No	Item
12	Hold-down Pad Assembly
13	Hinge Bolt
14	Lever
15	Bolt
16	Washer
17	Nut
18	Lower Blade
19	Lever
20	Nut
21	Washer
22	Hinge Bolt

OTHER PRODUCTS FROM THE CLARKE METAL- WORKER RANGE INCLUDE

Metal Part Benders



Compact benders, ideal for creating metal components using round or square section

Metal Folder



For fast, accurate sheet metal folding, designed to be held in a standard bench vice.

Engineering Drill Presses



Available for the hobbyist or professional. Ideal for fast, accurate drilling of metal and plastic. Choose from bench or floor mounted.

Bench Grinders



DIY, professional & heavy duty bench grinders, ideal for grinding garden and workshop tools and general metalworking

A SELECTION FROM THE VAST RANGE OF

Clarke®

QUALITY PRODUCTS

AIR COMPRESSORS

From DIY to industrial, Plus air tools, spray guns and accessories.

GENERATORS

Prime duty or emergency standby for business, home and leisure.

POWER WASHERS

Hot and cold, electric and engine driven - we have what you need

WELDERS

Mig, Arc, Tig and Spot. From DIY to auto/industrial.

METALWORKING

Drills, grinders and saws for DIY and professional use.

WOODWORKING

Saws, sanders, lathes, mortisers and dust extraction.

HYDRAULICS

Cranes, body repair kits, transmission jacks for all types of workshop use.

WATER PUMPS

Submersible, electric and engine driven for DIY, agriculture and industry.

POWERTOOLS

Angle grinders, cordless drill sets, saws and sanders.

STARTERS/CHARGERS

All sizes for car and commercial use.



PARTS & SERVICE: 0208 988 7400

E-mail: Parts@clarkeinternational.com or Service@clarkeinternational.com

SALES: UK 01992 565333 or Export 00 44 (0)1992 565335

Clarke® INTERNATIONAL Hemnall Street, Epping, Essex CM16 4LG
www.clarkeinternational.com